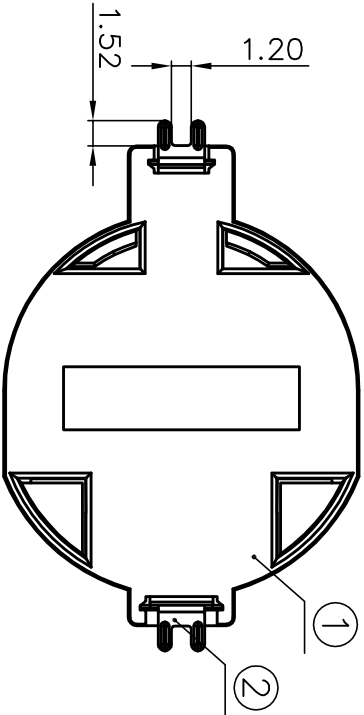
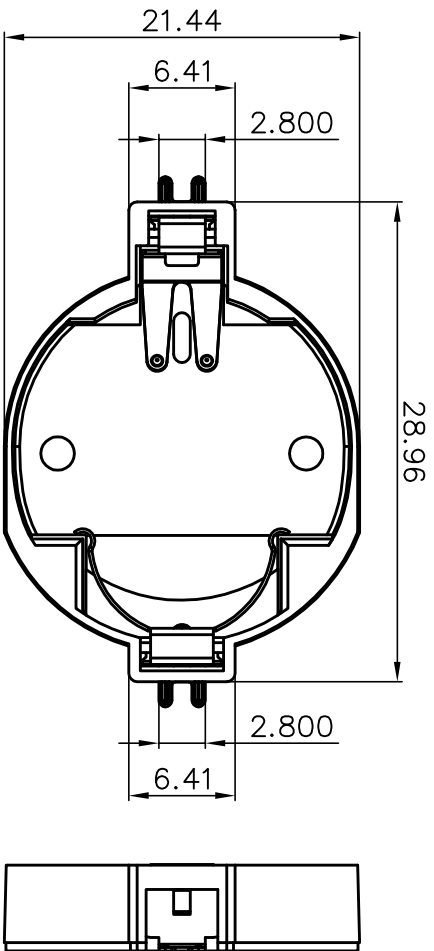
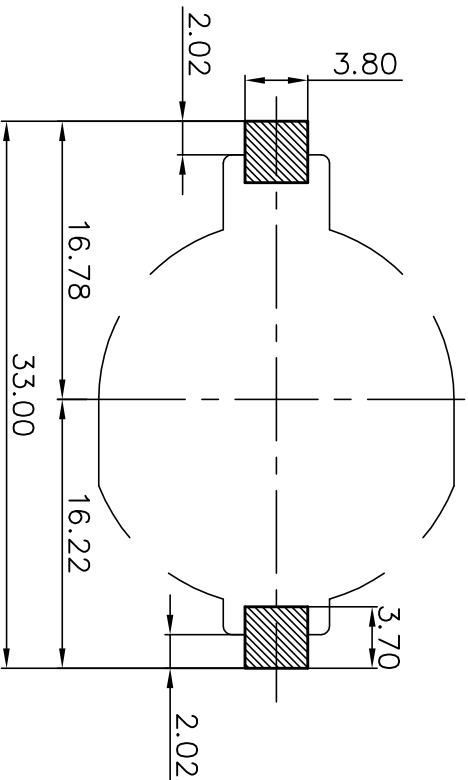


ROHS



ECN NO.	REV	DATE	DESCRIPTION	CHANGE	CHECK	APPRO

1. MATERIAL:
- a. HOUSING: PPS
 - b. CONTACT: PHOSPHOR BRONZE (SURFACE PLATING: Au1u")
2. ELECTRIC:
- a. CONTACT RESISTANCE: 30 MILLIOHMS MAX
 - b. INSULATION RESISTANCE: 1000 MEGA OHMS MIN
 - c. DIELECTRIC VOLTAGE: 500V AC ONE SEC LEVEL
 - d. OPERATING TEMPERATURE: -25°C ~ +85°C



PCB Layout Diagram
Top View

MeiYang Electronics Co.Ltd

UNLESS OTHERWISE SPECIFIED TOLERANCES

DECIMALS: ANGLES:
X.X : ±0.30X : ±1°
X.XX : ±0.25 X.XX : ±0.5°
X.XXX : ±0.20
X.XXX : ±0.10

WEIGHT: 1.21g

SHEET 1 OF 1

DSND LQ.HUANG DATE 2018-09-06 TITLE:

CHKD DATE DATE 2018-09-06 PART NO.: BS-2032-10Sony SMT

APVD XY.XUE DATE 2018-09-06

SCALE: SIZE:A4 VIEW: DRAW NO.:MY-CP-0003

UNIT:mm REV:A/0 OBJECT:MY

NO.	PART NAME	Q'TY	MATERIAL	PLATING & COLOR
③	TERMINAL(-)	1	PHOSPHOR BRONZE, T=0.20mm	Gold Plating and Ni Under-Plating
②	TERMINAL(+)	1	PHOSPHOR BRONZE, T=0.20mm	Gold Plating and Ni Under-Plating
①	HOUSING	1	PPS	BROWN